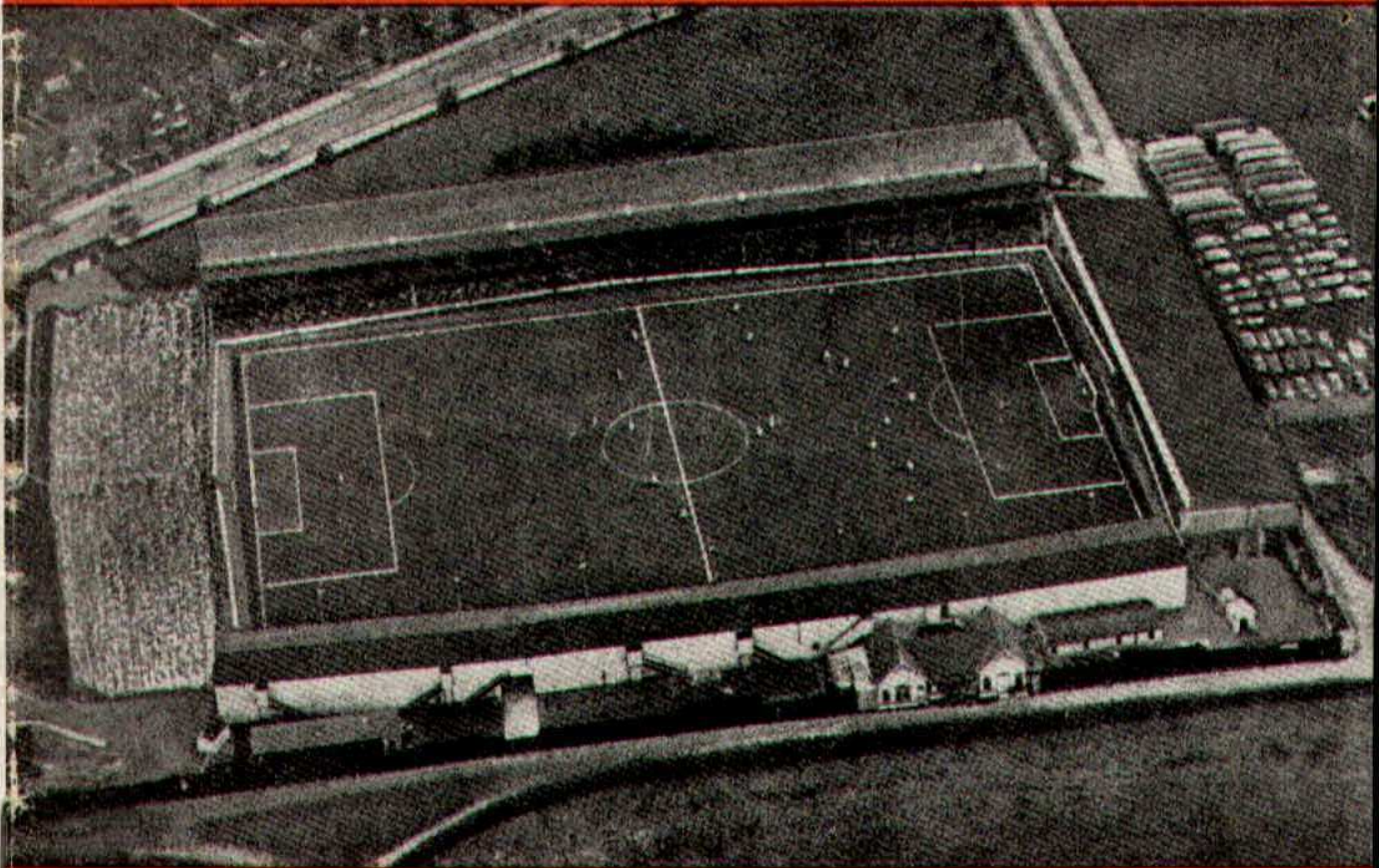




SWINDON TOWN FOOTBALL CLUB



TUESDAY, OCTOBER 17th, 1961

DIVISION III

SWINDON TN. v. Q.P.R.

Kick-off 7.30 p.m.

Official Programme **4d.**

**SOUTHERN LAUNDRY
CO. LTD.**

Launderers and Dry Cleaners



TELEPHONE 4161

STATION RD., SWINDON

GO MODERN — GO ELECTRIC

for

TELEVISION, RADIO AND
DOMESTIC APPLIANCES

D. ROBSON

22 HAVELOCK STREET

6602

Swindon

6602

Make your Goal the

EAGLE HOTEL

(Prop.: Tom Hamilton)

WORTHINGTON :: GUINNESS

DEVENISH BEERS :: BASS

REGENT ST., SWINDON

LITTLE & CO. LTD.

The Name Linked with Service
and Value

*The Popular Ladies' and Men's
Complete Outfitters*



31-32 FLEET ST., SWINDON

Telephone 2831

NEXT MATCH . . .

HELLENIC LEAGUE

SWINDON T. v. PRESSED STEEL

SATURDAY NEXT, OCTOBER 21st, 1961

Kick-off 3 p.m.

Dr. BARNADO'S HOMES

Take care of 7,500 needy children and
still depend on public support

Send your donation to—

**Barnardo House, Stepney
Causeway, London, E.1.**

Donated by: Mrs. S. Mutch, 60
Cricklade Road, Swindon

LEESE, ING & Co. Ltd.

Incorporating BARKER & CO.

*Mineral Water and
Squash Manufacturers*



LANSDOWN RD., SWINDON

Telephone 2744/2320

HULFORD MOTORS Ltd.

SELF DRIVE HIRE

Fleet of 1961 Fords
Populars - Anglias - Consuls

SHRIVENHAM ROAD

(200 yards from Football Ground)

Phone 4934

LARGE CAR PARK AVAILABLE

For Quality
FLOWERS, FRUIT & VEGETABLES
Also FROZEN FOODS

**CLARKE'S
of Old Swindon**

Proprietors: A. G. G. & J. A. W. HUNT

64 DEVIZES ROAD - SWINDON

'Phone: 2337

ORDERS DELIVERED

SWINDON TOWN FOOTBALL COMPANY LIMITED

Registered Office: COUNTY GROUND, SWINDON

—+—
Directors:

Mr. W. J. CASTLE (Chairman)

Mr. H. E. LANE (Vice-Chairman)

Mr. B. T. HAMILTON (Hon. Treasurer)

Messrs. C. CHANDLER, J.P., J. DAVIES,

R. FRICKER, C. J. GREEN, F. PLYER,

H. WILLIAMS and K. H. WILMER.

Manager: B. J. HEAD.

Secretary: R. A. MORSE.

VOL. 12

TUESDAY, OCTOBER 17th, 1961

No. 10

Club Notes

This evening we entertain Queen's Park Rangers who earlier in the season beat us by 6 goals to 1. Can we return the compliment, and so gain revenge?

If we can repeat the form shown in the second-half of the Reading game, all should be well. That occasion was a great success, judged from every angle.

The biggest gate of the season, over 17,000; the first prize in the Jackpot Competition well over £47, and, the most important point of all, a resounding win by 4 goals to 1.

Maybe Swindon was a little fortunate to be leading at half-time, but the one goal scored was excellent, and let us credit the defence for its relentless tackling, and chasing. We played much better in the second half, and ten minutes after the interval came the quick scoring of three well-worked and well-taken goals.

The victory was undoubtedly a team effort, especially in regard to the goals, but Swindon's strength was certainly in the half-back line with skipper Owen outstanding. Other pleasing features were the scoring of two goals by left-winger Darcy, and the come-back of centre-forward Macpherson.

The Reading officials although somewhat downhearted at what they termed a "good drubbing", were real sportsmen in every sense of the word. Not only did they congratulate the home team, but also spoke highly of the football played, and felt that Swindon well deserved their victory. They were also full of praise for the referee, and that from a team defeated 1-4.

Thank you, Reading, it is always a pleasure to meet you.

Continued on page 4

THE WALCOT CHEMIST

WIDE RANGE OF COSMETICS, PERFUMES,
BABY NEEDS AND PHOTOGRAPHIC GOODS

10 SUSSEX SQUARE - WALCOT
TEL. 6680

M. J. REYNOLDS

Grocer

152/154 CRICKLADE ROAD
5479 SWINDON 5479

COOKED HAM OUR SPECIALITY

WATSON'S CENTRAL NEWSAGENCY

LTD.

Swindon's Leading Wholesaler

1 WELLINGTON STREET, SWINDON
Tel. 2049

L. WOLLEN

OFF LICENCE

WINES & SPIRITS

Arkell's Ales and Stout

373 Cricklade Rd., Swindon

Deliveries Daily Phone 3508

CLUB NOTES—continued

Sorry we defeated you, but we needed the points, and the goals.

Not only are we climbing the league table, and amassing points, but we are also improving the goal average. Our last five games have resulted as follows: 4-0, 0-0, 0-1, 1-0, 4-1; 9 goals scored for and 2 against, and 7 points gained out of a possible ten. Form such as that will surely

see the position in the league table much higher than at present. Two more points tonight please lads!

Our opponents hold a high place and will be keen to win. They are a strong fast side, with plenty of goal potential, as witness last Saturday when they scored five goals.

Despite this we trust our team will repeat Friday evening, and gain two more valuable points.

FOR ALL YOUR ANGLING NEEDS
CONSULT

FRANK WOODWARD

Swindon's Fishing Tackle Specialist

25 HAVELOCK ST., SWINDON
PHONE 3879

WE ARE SPECIALISTS IN —
OUTSIDE CATERING AND LICENSED BARS
FOR WEDDINGS, FETES, SPORTS DAYS, etc.

THE MASONS ARMS HOTEL

31 HIGH STREET - SWINDON 3522

H. E. LANE

(REGENT STREET) LTD.

The Pork Sausage Specialists

117 Victoria Road, Swindon

Telephone: 2336

COMLEY'S

Modern Music Centre

26 HAVELOCK ST., SWINDON

RECORDS - MUSIC - INSTRUMENTS

Top Twenty "Pops" always in stock
and wide selection of Jazz and Classics

PERSONAL SUPERVISION

Phone 3874

FIXTURES AND RESULTS TO DATE

DIVISION III

1961

Aug. 19	Portsmouth	H	1-3
21	Coventry City	A	1-2
26	Crystal Palace	A	1-3
29	Coventry City	H	3-3
Sept. 2	Bournemouth	H	1-1
4	Queen's Park R.	A	1-6
9	Watford	A	0-2
16	Hull City	H	1-1
19	Barnsley	H	1-1
23	Northampton T.	A	2-1
27	Barnsley	A	2-6
30	Lincoln City	H	4-0
Oct. 3	Grimsby Town	H	0-0
7	Brentford	A	0-1
10	Grimsby Town	A	1-0
13	Reading	H	4-1
17	Queen's Park R.	H	
21	Bristol City	A	
28	Bradford	H	
Nov. 4 (1)			
11	Shrewsbury Tn.	H	
18	Peterborough U.	A	
25 (2)			
Dec. 2	Newport County	A	
9	Southend U.	H	
16	Portsmouth	A	
23	Crystal Palace	H	
26	Halifax Town	A	
30	Halifax Town	H	

1962

Jan. 6 (3)	Notts County	A	
13	Bournemouth	A	
20	Watford	H	
27 (4)	Port Vale	H	
Feb. 3	Hull City	A	
10	Northampton T.	H	
17 (5)	Lincoln City	A	
24	Brentford	H	
Mar. 2	Reading	A	
10 (6)	Bristol City	H	
17	Bradford	A	
24	Notts County	H	
31 (S.F.)	Shrewsbury	A	
Apr. 7	Peterborough U.	H	
14	Port Vale	A	
20	Torquay Utd.	H	
21	Newport County	H	
23	Torquay Utd.	A	
28	Southend Utd.	A	
May 5 (Final)			

FOOTBALL COMBINATION

1961

Aug. 22	Leyton Orient	H	0-0
Sept. 6	Southend Utd.	A	1-3
13	Portsmouth	A	1-7
20	Bournemouth	A	0-3
26	Birmingham	H	1-1
Oct. 4	Aldershot	A	1-2
10	Watford	H	1-3
Nov. 1	Millwall	A	
7	Fulham	H	
14	Southampton	H	
22	Coventry City	A	
29	Reading	A	
Dec. 5	Brighton	H	
12	Brentford	A	
19	Charlton	H	

1962

Jan. 3	Chelsea	A	
9	Chelsea	H	
17	Leyton Orient	A	
23	Portsmouth	H	
31	Birmingham City	A	
Feb. 6	Bournemouth	H	
13	Watford	A	
20	Aldershot	H	
26	Queen's Park R.	A	
Mar. 6	Millwall	H	
14	Fulham	A	
20	Southend Utd.	H	
28	Southampton	A	
Apr. 3	Coventry City	H	
10	Reading	H	
17	Brighton	A	
23	Brentford	H	
May 2	Charlton	A	
To be arranged	Q.P.R.	H	

Our Visitors

QUEEN'S PARK RANGERS

Founded in 1885 by the Rev. Gordon Young for the boys of Droop Street Board School, they became a professional club in 1898. Joined Southern League in 1899 and Football League (Div. III) as original members in 1920.

Won promotion to Division II in 1948, but returned to Division III four years later. Just missed promotion last season, finishing third after being in top two for most of the season.

Manager Alec Stock was formerly with Leyton Orient. So was John Smith, one of the youngest club secretaries in the Football League.

Details of the players from whom the team for this evening's game will be selected are as follows:-

Tony Ingham (Left Back)

Signed from Leeds twelve seasons ago, he is now 36 but still splendidly consistent. Led the side for eight years, but relinquished position when he went part-time last season. 5ft. 11in. 11st. 11lb.

Mike Keen (Right Half)

Highly promising youngster who is also at home as an inside forward. A professional with the club since 1958, he is only 21 and looks to have a bright future in the game. 6ft. 1in. 12st.

Keith Rutter (Centre Half)

Like Ingham, whom he replaced as captain, was signed from Leeds. Most reliable performer, he did not miss a game in last two seasons. 6ft. 11st. 9lb.

Rodney Slack (Goalkeeper)

Young reserve who joined Rangers from Leicester in March 1961. 5ft. 9in. 11st.

John Collins (Inside Forward)

Another local boy, 20 years old, who graduated via the club's youth side. 5ft. 8in. 10st. 12lb.

Ray Drinkwater (Goalkeeper)

In his fourth season with the Rangers, whom he joined from Portsmouth. Took over first-team spot from Great Britain Olympic choice Mike Pinner, and was ever-present last season. Father of twins, a boy and girl. 6ft. 2in. 12st. 7lb.

Roy Bentley (Centre Half)

Capped 12 times by England as centre or inside forward, later developed into top-line half back. Has played over 500 League games, with Bristol City, Newcastle, Chelsea and Fulham. Won League Championship medal with Chelsea. Club captain in his first season with Q.P.R. 5ft. 11in. 12st. 3lb.

Peter Angell (Left Half)

Signed from Slough ten seasons ago, he made his League debut at outside left in 1953, but has since proved his worth as an attacking wing half. 5ft. 10in. 11st. 5lb.

Brian Bedford (Inside Right)

Played for Southampton, Reading and Bournemouth without setting the Division alight. At Q.P.R. however, he has shone as a goal-getter. Equalled club scoring record last season with 37 goals—33 League, 3 F.A. Cup and 1 League Cup. 5ft. 11in. 12st.

C. Dunn & Son

BUILDERS & DECORATORS

Alterations, Renovations, Conversions
Plumbers and Sanitary Engineers

503 CRICKLADE ROAD Tel. 2522

NOTTON'S CAFE

COUNTY ROAD

200 yards from Ground

RIGHT ON THE BALL

FOR PAINTS OF GOOD QUALITY
H. S. HODGES & SONS
(SWINDON) LTD.

CRICKLADE ROAD - SWINDON
PHONE 2422

Dulux, Brolac, Friary, Valspar, Wallcharm, etc.

Harold Fleming

24 REGENT CIRCUS - SWINDON

Phone 22813



FOR ALL SPORTS EQUIPMENT

Also, Scout, Guide, Cub and Brownie Wear

OUR VISITORS—continued

Bernard Evans (Centre Forward)

Signed from Wrexham last season, he soon made his forceful leadership felt, and earned a useful goal-tally, 6ft. 2in. 13st. 11lb.

Jim Towers (Inside Left)

"Big Jim", as he is known, was born close to the Shepherds Bush ground and played for Brentford nine seasons, scoring 170 League goals. 6ft. 0in. 12st. 5lb.

Jimmy Andrews (Utility Forward)

Former Dundee, West Ham and Leyton Orient inside or outside left. Recently awarded his advanced F.A. coaching certificate. 5ft. 6in. 11st. 5lb.

Mike Barber (Utility Forward)

Just 20, he is a footballer of considerable promise. At his best on the wing, he is a speedy, intelligent raider. 5ft. 10in. 10st. 9lb.

Bill Williams (Full Back)

A former England Youth International, aged 18, signed from Portsmouth during the close season. Guitar-playing young giant who favours a wing-half spot. 6ft. 2in. 12st. 12lb.

George Bristow (Wing Half)

Third of manager Alec Stock's new captures from nearby Brentford. Played ten seasons for the "Bees". 5ft. 9in. 12st. 21lb.

GODDARD & Co.

Wholesale and Retail

WINE - SPIRIT - BEER
AND CIDER MERCHANTS

9 REGENT STREET, SWINDON

Telephone 2415

Also at

4 WINGATE PARADE, SWINDON

We are your **Main Distributors** for
VAUXHALL and **JAGUAR** cars
BEDFORD Vans and Trucks, etc.

Any make of Car or Truck
supplied - Used Vehicles a
specialised part of our
business.

SKURRAY'S
SWINDON

Telephone: 2266

H. HIBBERD LTD.

Plant Hire Contractors

TRACTORS and SCRAPERS
BULLDOZERS
DROTT SHOVELS
DIGGERS
ROAD ROLLERS

40 NEWPORT STREET, SWINDON

Telephone 6125

Swindon Bacon Curing Co. Ltd.

Specialists in
Bacon, Pork & Cooked Ham

50 FLEET STREET
SWINDON

Telephone: 2122

WARNES (Swindon) Ltd.

Electrical Contractors
Radio and Television

Contractors to:

SWINDON TOWN FOOTBALL CLUB

51/52 COMMERCIAL RD., SWINDON

'Phone 6346/7

160 COUNTY RD., SWINDON

'Phone 6346/7

9 SWINDON ST., HIGHWORTH

'Phone 379

7 CLIVE PARADE, SWINDON

'Phone 6346/7

DAY RETURN TICKETS

On Weekdays and Sundays (services permitting), available in each direction by any train the same day. From Swindon Junction to:-

	2nd Class
Bath Spa	7/6d.
Bristol (T.M.)	9/0d.
Weston-super-Mare	11/6d.

Other fares available. Ask for pamphlet B7/411, giving full information.

BRITISH RAILWAYS

Western Region

W. B. CARTER

Newsagent, Tobacconist and Confectioner
Large selection of Boxes of Chocolates
always in stock

CORONA, TIZER, DRINKS, etc.

Agents for Wall's Ice Cream

188/190 FERNDALE RD., SWINDON

Telephone 3089

MILLS & MER

H
O
U
S
E
F
U
R
N
I
S
H
E
R
S

SWINDON TOWN v. QUEEN'S PARK
SWINDON T

RIGHT WING Colours: RED SHIRTS,

Burton

Jones (2)

Morgan (4)

Owen (5)

Summerbee (7) Hunt. E. (8) McPherson

Referee—

Mr. P. H. Carr
(Redditch)



Barber (11) Collins (10) Evans (9)

Angell (6)

Rutter (5)

Ingham (3)

Slack

QUEEN'S PARK I

LEFT WING

These teams are subject

16-17 BRIDGE ST. S

ENGLAND'S QUALITY
SERVICE

Your Car washed in un

THE INSTANT

6/- ANY MAKE —

Local Station

MARLBOROUGH ROAD
SWINDON

QUEENS RO
READING

Make your goal . . .

M'ILROYS RESTAURANT

Top of the Catering League
COFFEE - LUNCHES - TEAS
Parties catered for.
Regent Street, Swindon. Tel. 5294

THE PLESSEY COMPANY Ltd.

After years of achievement have great expansion plans for the future.

**TECHNICAL STAFF
CLERICAL STAFF
MANUAL WORKERS**

are essential for this progress.

Interested persons please apply to the Personnel Department.

HERRICKS LTD.

PARK RANGERS. Kick-off 7.30 p.m.

NDON TOWN

SHIRTS, WHITE SHORTS LEFT WING

Burton

Trollope (3)

Wen (5)

Woodruff (6)

McPherson (9) Hunt, R. (10) Darcy (11)



Linesmen —

Red Flag —

Mr. S. J. Turnell
(Bristol)

Yellow Flag —

Mr. B. F. Watkins
(Hereford)

rans (9) Bedford (8) McClelland (7)

utter (5) Keen (4)

Bentley (2)

Slack

PARK RANGERS

subject to alteration

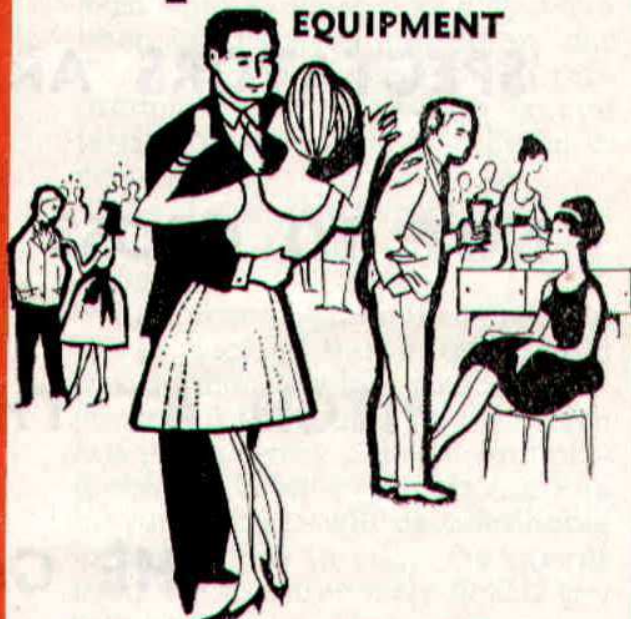
RIGHT WING

T. SWINDON PHONE 5365

U
P
H
O
L
S
T
E
R
E
R
S
•
R
E
M
O
V
A
L
S

INSIST ON

Garrard EQUIPMENT



For Superb Tape and Record Playing



Fitted by the World's leading manufacturers.

QUALITY CAR WASHING SERVICE

in under 5 minutes by

FAST CAR WASH

£ — 4 WASHES £1

Stations:

WENS ROAD
READING

QUEENS ROAD
BRISTOL

WILSONS (SWINDON) LTD.

BUILDERS OF
MODERN ATTRACTIVE HOUSES
AND BUNGALOWS

All enquiries to Head Office:

90 COMMERCIAL ROAD
SWINDON 6361-3

ONE QUALITY ONLY—THE BEST!
FRESH SUPPLIES DAILY

York Road Fisheries SWINDON

WET, DRY or FRIED Tel.: 3680

Rent your T.V. - Washing Machines
Spin Dryers - Electrical Installations
from

D. V. HOLLAMBY LTD.

138 High St., Wootton Bassett, Wilts.
Telephone 295

ALL LEADING MAKES IN STOCK

DEMPSTER ENTERPRISES, offer a modern fleet of 4 and 6 seater self-drive hire cars, for your pleasure and convenience. For advance bookings apply:-

Dempster Enterprises
38 VICTORIA ROAD, SWINDON
Tel. 6460

Howard Autos, Swindon's Main Cotton Motor Cycle distributors always have a good selection of guaranteed used cars for you to choose from.

HOWARD AUTOS
134/5 MANCHESTER ROAD
Tel. 6603
and at 3 WELLINGTON STREET, SWINDON

SPECTATORS ARE REQUESTED NOT TO CROSS THE PLAYING PITCH AT THE END OF THE GAME

'BAILEY'S'

2 Cheney Manor Road - Swindon

NEWSAGENT :: TOBACCONIST
CONFECTIONER

Personal Attention and Satisfaction
always assured.

MEET YOUR FRIENDS FOR AN
ENJOYABLE EVENING AT

THE KINGSDOWN INN

(Host A. W. Vann)

FULLY LICENSED - ARKELL'S BEERS
SNACKS, Etc.

Stratton St. Margaret. Tel.: 3283

A. WHEELER & SON

330 CRICKLADE ROAD

PHONE 2095

FOR QUALITY COALS
AND PROMPT SERVICE

Ring 4711 or call at
"The Corner Off Licence"
115 CRICKLADE ROAD
for your Wines, Spirits and Beers
Free Deliveries - Glasses loaned free
* * *
Lowest Terms for Self Drive Cars

Supporters' Club Notes

Last Tuesday we paid a visit to the County Ground to see the Combination team in action against Watford Reserves.

The match was not an inspiring one, by any means, and the weather in the second half did nothing to improve matters, but those present must have felt well rewarded for their presence when the welcome news from Grimsby was announced.

These notes are being written prior to the Reading match, so that the past three matches (two against Grimsby and Brentford away), have produced the rather peculiar situation that, although the team scored only one goal in four and a half hours' football, nevertheless three points were gained.

This fact apart, the win at Grimsby had the effect of reviving flagging interest in some quarters, and we hope that by this time, the match against Reading may have helped to maintain it.

On the whole, the gates may be regarded to have been satisfactory to date, taking the playing record into consideration, and comparing them with those experienced by other clubs, but, at the moment, the average is very close to our membership numbers, which seems to indicate that there is plenty of room for improvement in both cases, as we have quite a number of members who do not attend matches. On the other hand, we know that large numbers of our spectators are not members of our club, and if they

should feel disposed to join the ranks, they would be very heartily welcomed.

When travelling on a bus recently we heard two disgruntled people discussing the team, and one asked "What is the Supporters' Club doing?" The answer shortly is that we are doing our best, but could do more with wider patronage of our efforts.

The tendering of pound notes for fourpenny programmes, particularly in the dark evenings, causes our sellers inconvenience from time to time, and they have been officially authorised by our Committee to decline to sell programmes to people who cannot tender a reasonably small coin in payment.

We hope that spectators will co-operate in this small matter. Thank you.

At a recent Committee meeting it was decided that in addition to the normal weekly competitions, the usual Christmas Draw, which has proved very popular and profitable in recent years, shall again be run. Tickets will be obtainable in due course through the agents from whom the weekly tickets are purchased.

The popularity of this draw in past years has been due, not only because of the cash prizes, but also because of a large number of seasonable prizes kindly given by good friends of the club. We hope that this gesture will again be forthcoming. "Liquid" prizes prove particularly popular in Christmas draws.

Holder of lucky programmes, if "lucky" is appropriate, for Friday, the 13th were: 141, Mr. G. Kilham, 18 Westfield Road, Witney. 4141, Mr. Ferris, Witney.

Have you purchased your ticket for the

HALF-TIME JACKPOT DRAW

TICKETS 6d. EACH on sale on the Ground

FOUR PRIZES

* * *

Result of Draw on Friday, 13th October, 1961

1st Prize—£47-0-0. Ticket No. 9355

2nd Prize—£35-5-0. Ticket No. 10768

3rd Prize—£23-10-0. Ticket No. 12887

4th Prize—£11-15-0. Ticket No. 6701

* * *

**TODAY'S WINNING NUMBERS WILL BE ANNOUNCED AT
HALF-TIME.**

The following will assist you to record the numbers and prizes as
announced.

1st PRIZE	No.....	Amount £.....
2nd PRIZE	No.....	Amount £.....
3rd PRIZE	No.....	Amount £.....
4th PRIZE	No.....	Amount £.....

Winning numbers will also be published in "Evening Advertiser"

The Rendezvous of all Sportsmen . . .

THE CROWN INN

(Host: Frank Plyer)

Arkell's Best Ales : Fully Licensed
Snacks, etc.

STRATTON ST. MARGARET Tel. 2339

SUPPORT YOUR HOME

CIVIL DEFENCE

Plays a vital part in saving lives

Particulars:

CIVIC OFFICES - SWINDON

WIN OR LOSE !

THE FOOD IN THE

China Restaurant

IS BEST

* * *

107 COMMERCIAL ROAD

SWINDON 6888

Open Daily 12 noon - 11.30 p.m.

For all Chinese and English Dishes

ADVANCE BOOKING

Tickets for seats in the Stand for Division III matches may be booked in advance on application to the office, or, by post. Postal applications should be accompanied by a remittance and stamped addressed envelope. Tickets booked by telephone must be collected by 12 noon on Saturdays, or, 4.30 p.m. for mid-week games.

Ticket prices are as follows:

NEW STAND

Blocks 'A' and 'E' ...	4/6d.
Blocks 'B' and 'D' ...	5/6d.
Block 'C' ...	6/6d.

OLD STAND

Blocks 'F', 'G' and 'I' ...	4/-d.
Block 'H' ...	5/6d.
Centre Box ...	8/-d.

COATE GARAGE



THE ALCOHOL FUEL

REPAIRS OVERHAULS
SERVICING ★ REBORING
TYRES WELDING

Props.: E. V. & W. H. Mattick

MARLBOROUGH ROAD, SWINDON

For something a little different, try

DON JONES

HIGH CLASS CONFECTIONER
AND TOBACCONIST

Always a good selection of
SUCHARDS' - TOBLER
TERRY'S

Quality Chocolates and Presentation
Boxes

112 COMMERCIAL ROAD

6012

SWINDON

6012

Typewriters from £10

FULLY GUARANTEED

**DOBELL SHEARMAN
& CO. LTD.**

26 HIGH ST. & 33 FARINGDON RD.,
SWINDON Telephone 4961

Only 800 yards to your Dream Car—

NEW ALPHA MOTOR Co.
(SWINDON) LTD.

QUEENS DRIVE, SWINDON

Tel. 5062/63

FOR TOP QUALITY USED CARS

Open 7 days per week from 7 a.m. to 10.30 p.m.
Servicing for all makes of cars

DIVISION III

	P.	W.	D.	L.	F.	A.	Pts
Bournemouth	16	9	6	1	31	15	24
Portsmouth	15	9	5	1	26	14	23
Peterborough Utd.	16	10	1	5	41	37	21
Reading	16	9	1	6	33	30	19
Port Vale	16	7	4	5	22	19	18
Grimsby Town	16	8	2	6	24	24	18
Queen's Park Rangers	14	7	3	4	40	27	17
Bristol City	16	7	3	6	21	16	17
Crystal Palace	16	6	5	5	35	27	17
Coventry City	15	6	4	5	25	24	16
Watford	16	5	6	5	27	28	16
Northampton Tn.	16	6	3	7	29	22	15
Hull City	15	5	5	5	21	18	15
Notts County	16	6	3	7	31	28	15
Shrewsbury Town	15	5	5	5	27	27	15
Halifax Town	14	6	3	5	22	23	15
Bradford	14	7	0	7	27	26	14
Barnsley	16	6	2	8	30	37	14
Southend Utd.	15	4	5	6	20	22	13
Swindon Town	16	4	5	7	23	31	13
Lincoln City	15	4	4	7	21	32	12
Torquay Utd.	15	4	1	10	27	35	9
Newport County	15	2	3	10	19	36	7
Brentford	16	3	1	12	11	35	7

Chappell's Funeral Service

(Fun. Dir.: A. A. Winchcombe)

**196 COUNTY ROAD
SWINDON**

24 hour Service Tel. 6073

*Your local "TEAM" for RENAULT
Sales and Service*

CORONATION CAR SALES

67/68 VICTORIA ROAD

Telephone 4964

**SEA VIEW HOLIDAY
CAMP**

YOUR HOST — Mr. BENNETT

* * *

WYKE REGIS - WEYMOUTH
Dorset

"COAL!"
"COAL!"
"COAL!"

J. WILMER

ST. MARGARET'S ROAD, SWINDON
Telephone 2535

MEET YOUR FRIENDS AT THE

Southbrook Inn

(Hosts: Mr. and Mrs. Jack Scutts)

FULLY LICENSED
CLINCH BEERS, ETC.

SOUTHBROOK STREET, SWINDON
Tel.: 5837

STOP! LOOK!

NU-HOMES

For all Household Fitments

Paints - Emulsions - Wallpapers
Kitchen Units and Bathroom Suites,
etc.

176a Manchester Road
TELEPHONE 2178

FORTHCOMING MATCH . . .

DIVISION III

SWINDON TN. v. BRADFORD

SATURDAY, OCTOBER 28th, 1961

Kick-off 3 p.m.

**BRITANNIA
MOTORS**

Proprietors: A. GODWIN

205-206 RODBOURNE ROAD
SWINDON PHONE 5303

- **TYRES**
NEW AND REMOULD
CASH OR EASY PAYMENTS
- **ACCESSORIES**
- **QUICK SERVICE AND REPAIRS**
AT SWINDON'S MOST MODERN
LUBRICATION BAY AND
WORKSHOP

*For High Class
Central Heating, Plumbing
Painting and Decorating
Electrical Installations
and Repairs*

NORTH WILTS

**Sanitary & Heating
Co. Ltd.**

NEWPORT ST., SWINDON

'Phone: 5373/4

Always at your service

L. BIBBY

For all Types, Rags, Iron and Metal,
etc. Spot Cash Paid. Please Telephone
2101 and our van will call.
THE PADDOCK, ERMIN STREET
STRATTON ST. MARGARET

Walcot Greengrocer

G. E. STAMMERS

NE

1 SUSSEX SQUARE
SWINDON

SWINDON 2526

*CAN ALSO BE YOUR LUCKY NUMBER ! ! !
if you ring*

HOLMES & LUCAS

14A REGENT STREET :: SWINDON

for all your

TELEVISION, RADIO AND ELECTRICAL REQUIREMENTS

LUCKY PROGRAMME

Please retain your programme. An announcement will be made at half-time of two numbers and the holders will be given a stand seat at the next Division III game. The persons who purchased the programmes bearing the winning numbers should call at the office after the game and claim their seats.

429

FRIED FISH AND CHIPS

Always Fresh - Always Hot

WALCOT FISHERIES

Sussex Square

Wet fish and frozen foods all refrigerated display.

HATTON'S NEWSAGENCY
A. J. D. WOODHOUSE & A. SMITH
Newsagents & Confectioners
Agents for Wessex School of Motoring
Main Booking Agents for Millers Coaches
6 REGENT CIRCUS (NEAR G.P.O.)
Telephone Swindon 2731

For Insurance or Hire Purchase
CARS - CARAVANS - MOTOR CYCLES, etc.
Consult

D. & H. HENTY LTD.
54 COMMERCIAL RD., SWINDON
SWINDON 5258

PANKHURST
The Palace, Gorse Hill,
Swindon

MOTOR CYCLE - SCOOTER AND
THREE-WHEELER SPECIALISTS
Open Mon. to Sat. 9 a.m. - 8 p.m. Phone 5466

MORGAN'S IRONMONGERS
C.A.S.M.S. (Swindon) Ltd.

2 SUSSEX SQUARE, WALCOT, SWINDON
also at 163 RODBOURNE ROAD Tel. 2516
Paraffin services to all areas town and country
Everything for the home
Precision Tools for Engineering Trade,
Tools for all trades

Maylott Studios

For GROUP & SPORT Photographs
OFFICIAL PHOTOGRAPHER TO
SWINDON TOWN FOOTBALL CLUB
31 FARINGDON RD. Tel. 2792